



# Project Profile

**Project Title:** M1 Jct41-42, Lofthouse Interchange

**Location:** Lofthouse, nr Leeds



Lofthouse Interchange connects two of the UK's busiest motorways, the M1 (J42) with the M62 (J29), initial construction of the interchange and its supporting structures was completed in 1970.

In 2011 the majority of the reinforced concrete supporting structures were showing signs of 'corrosion attack', most likely from 41 years of de-icing of the road decks above and the adjacent running surfaces of the M1. Typically sections of Reinforced Concrete had delaminated and spalled away significantly in splash zones and areas where deck joints were leaking on to the faces of the piers.

**APA Concrete Repairs Ltd** were involved in refurbishing the supporting structures as part of a central barrier replacement scheme on the M1 section. **APA** completed an extensive programme of concrete repairs during limited night and weekend road possessions. Works included hydro-demolition of concrete, reinforcement replacement, installation of galvanic anodes and scaffolding access. The works were completed to the satisfaction of the Highways Agency.

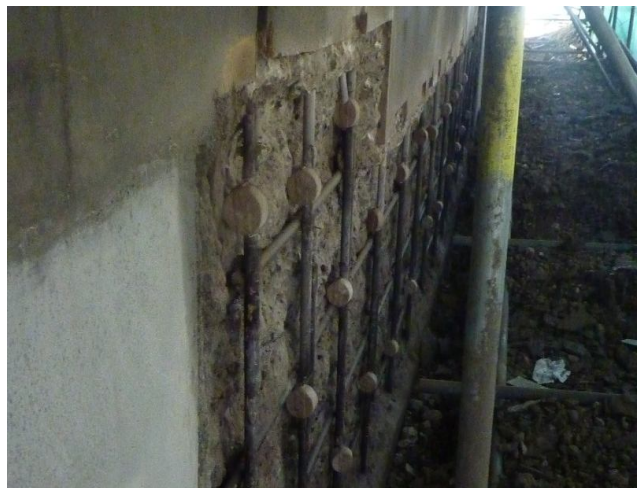


## NORTHERN OFFICE

Brian Royd Mills  
Greetland  
Halifax  
West Yorkshire  
HX4 8NF  
telephone: 01422 379 640  
facsimile: 01422 374 938

## SOUTHERN OFFICE

Unit 13  
Brocklebank Industrial Estate  
Brocklebank Road  
London  
SE7 7SX  
telephone: 0208 853 0627  
facsimile: 0208 853 0631



e-mail: [info@apaconcreterepairs.co.uk](mailto:info@apaconcreterepairs.co.uk)  
website: [www.apaconcreterepairs.co.uk](http://www.apaconcreterepairs.co.uk)

